

SIAT

M. J. MAILLIS GROUP



TAPE AND FILM DISPENSERS

H O M E O F F I C E S H O P B U S I N E S S

HAND DISPENSERS

SIAT

M. J. MAILLIS GROUP

H1

BASIC

PRE-TENSION TAPE BRAKE

- A = 50 mm (2")
- B = 120 mm (4¾")
- C = 76 mm (3")



H3 S

SAFETY & COMFORT

RETRACTABLE BLADE
SOFT TOUCH HANDLE

- A = 50 mm (2")
- B = 120 mm (4¾")
- C = 76 mm (3")



H11 CP

WORLD'S BEST SELLER

- A = 50 mm (2")
- B = 120 mm (4¾")
- C = 76 mm (3")



H2 S

SAFETY

RETRACTABLE BLADE

- A = 50 mm (2")
- B = 120 mm (4¾")
- C = 76 mm (3")

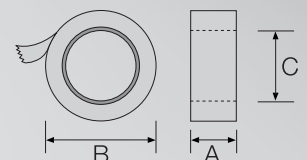


H66 CP

HEAVY DUTY

132 m TAPE ROLLER

- A = 50 mm (2")
- B = 140 mm (5½")
- C = 76 mm (3")



HAND DISPENSERS

SIAT

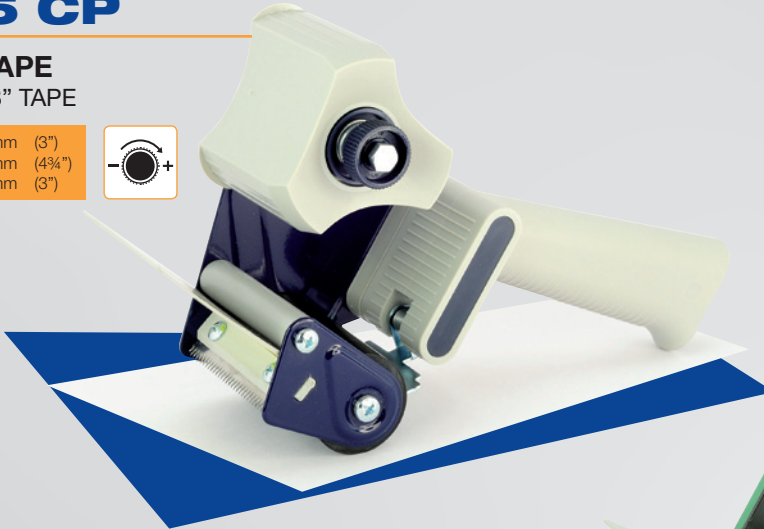
M. J. MAILLIS GROUP

H75 CP

WIDE TAPE

75 mm / 3" TAPE

- A = 75 mm (3")
- B = 120 mm (4¾")
- C = 76 mm (3")



H15

LOW NOISE

132 m TAPE ROLLER

- A = 50 mm (2")
- B = 140 mm (5½")
- C = 76 mm (3")



H100

SUPER WIDE

100 mm / 4" TAPE

- A = 100 mm (4")
- B = 140 mm (5½")
- C = 76 mm (3")

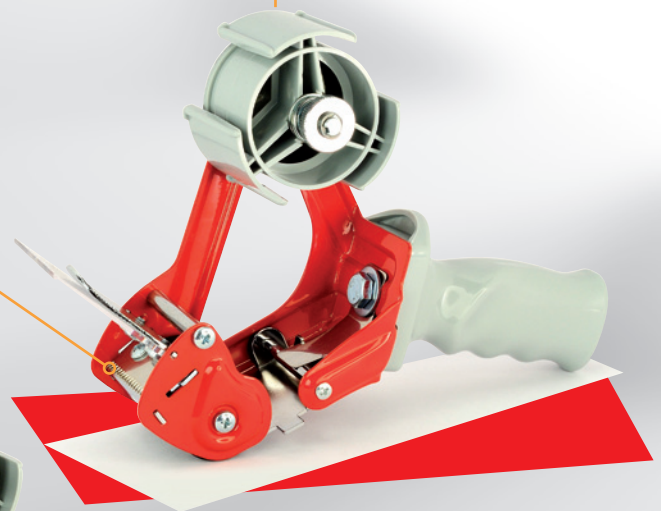


H13

SAFETY FULL METAL HEAVY DUTY

132 m TAPE ROLLER

- A = 50 mm (2")
- B = 140 mm (5½")
- C = 76 mm (3")



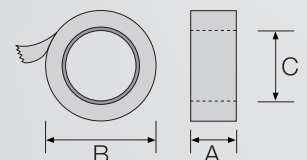
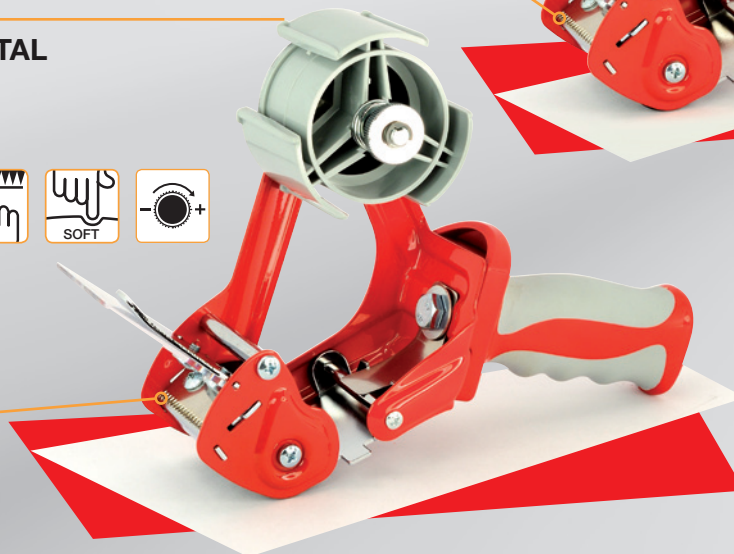
H14

SAFETY FULL METAL HEAVY DUTY

SOFT TOUCH HANDLE

132 m TAPE ROLLER

- A = 50 mm (2")
- B = 140 mm (5½")
- C = 76 mm (3")



ADJUSTABLE LENGTH DISPENSERS

SIAT

M. J. MAILLIS GROUP

SL1

Adjustable pre-selected length tape dispenser

Distributore di nastro a lunghezza regolabile

| | |
|------|--------------|
| A = | 25 mm (1") |
| B = | 140 mm (5½") |
| C¹ = | 25 mm (1") |
| C² = | 76 mm (3") |



SL3

Adjustable pre-selected length tape dispenser

Distributore di nastro a lunghezza regolabile

| | |
|-----|--------------|
| A = | 75 mm (3") |
| B = | 190 mm (7½") |
| C = | 76 mm (3") |



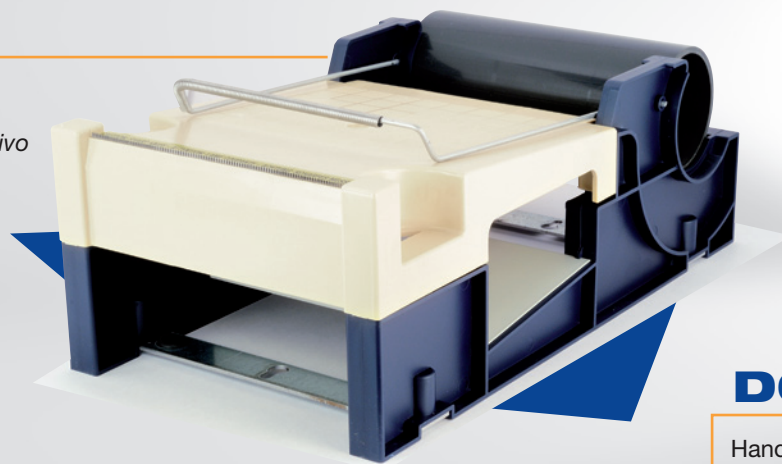
LABEL PROTECTION

LP6

Label protection dispenser

Distributore di nastro protettivo per etichette

| | |
|-----|--------------|
| A = | 150 mm (6") |
| B = | 145 mm (5¾") |
| C = | 76 mm (3") |



D6

Hand dispenser

Applicatore manuale

| | |
|-----|--------------|
| A = | 50 mm (2") |
| B = | 115 mm (4½") |
| C = | 76 mm (3") |



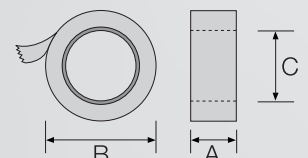
DISPENSERS

D2

Metal hand dispenser

Applicatore di nastro in metallo

| | |
|------|--------------|
| A¹ = | 19 mm |
| A² = | 25 mm |
| A³ = | 30 mm |
| A⁴ = | 38 mm |
| A⁵ = | 50 mm |
| B = | 120 mm (4¾") |
| C = | 76 mm (3") |



BAG SEALERS

SIAT

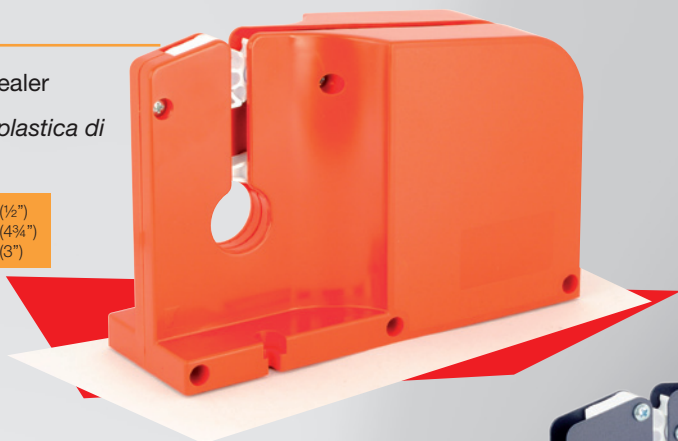
M. J. MAILLIS GROUP

E3

Plastic bag sealer

Sigillatore in plastica di sacchetti

A = 12 mm (1/2")
B = 120 mm (4 3/4")
C = 76 mm (3")



E7 / E7R

E7 Bag sealer

E7R Bag sealer with bag cutter

E7 Sigillatore di sacchetti

E7R Sigillatore di sacchetti con taglia sacchetto

A = 12 mm (1/2")
B = 120 mm (4 3/4")
C = 76 mm (3")



E7R inox

Stainless steel bag sealer with bag cutter

Sigillatore in acciaio INOX di sacchetti con taglia sacchetto

A = 12 mm (1/2")
B = 120 mm (4 3/4")
C = 76 mm (3")



E77R

Bag sealer with bag cutter and easy opening

Sigillatore di sacchetti con taglia sacchetto e apertura facilitata

A = 12 mm (1/2")
B = 190 mm (7 1/2")
C = 76 mm (3")

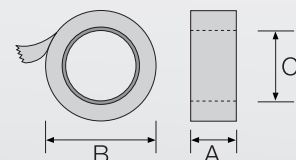
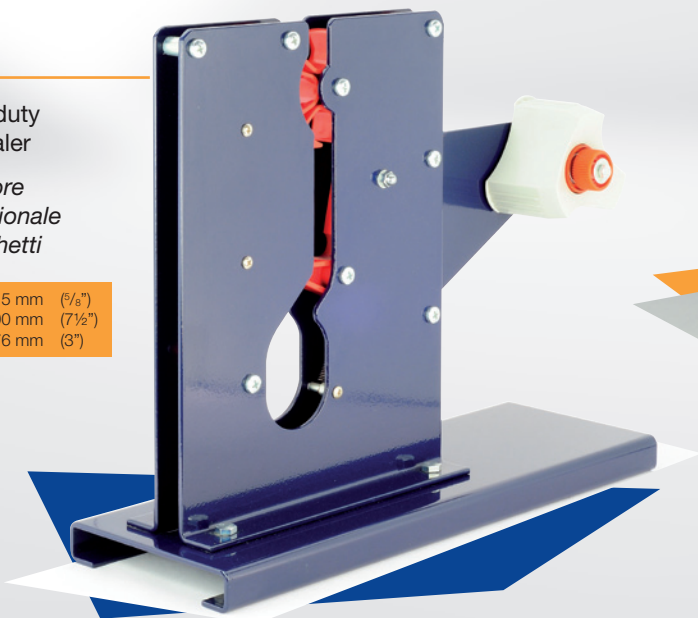


E9

Heavy duty bag sealer

Sigillatore professionale di sacchetti

A = 15 mm (5/8")
B = 190 mm (7 1/2")
C = 76 mm (3")



DESK DISPENSERS

SIAT

M. J. MAILLIS GROUP

B20

Desk dispenser with double core tape holder and pen holder
three colors available

Dispenser con doppio supporto rotolo e con portapenna disponibile in tre colori

A = 25 mm (1")
B = 125 mm (5")
C¹ = 25 mm (1")
C² = 76 mm (3")



B21

Desk dispenser
three colors available

Dispenser disponibile in tre colori

A = 19 mm (¾")
B = 70 mm (2¾")
C = 25 mm (1")



GOLF

Desk dispenser
five colors available

Dispenser disponibile in cinque colori

A = 19 mm (¾")
B = 64 mm (2½")
C = 25 mm (1")



B3TC

Dispenser for double tape
with clamp

Dispenser a morsetto con doppio portarotolo

A = 15 ÷ 50 mm
B = 140 mm (5½")
C = 76 mm (3")

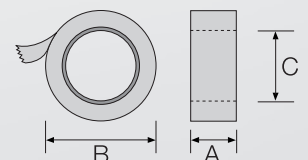
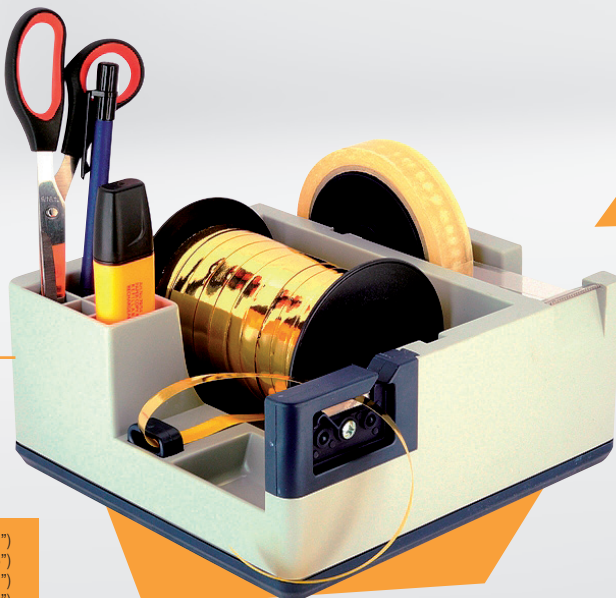


B22

Multifunction dispenser

Dispenser multifunzione

A = 25 mm (1")
B = 125 mm (5")
C¹ = 25 mm (1")
C² = 76 mm (3")



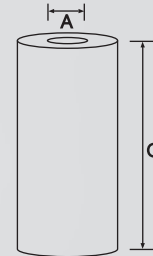
STRETCH FILM DISPENSERS

FILM FROM M.J. MAILLIS AVAILABLE
FILM DISPONIBILE DA M.J. MAILLIS

SIAT

M. J. MAILLIS GROUP

SRT



| TYPE | A | C |
|-------|----------|-----|
| SR-T | 76-50-38 | 508 |
| SP50 | 50 | 508 |
| SP38 | 38 | 508 |
| ISP50 | 50 | 150 |
| ISP38 | 38 | 150 |



SP38



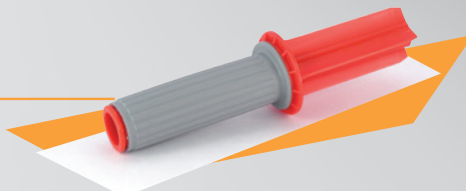
SP50



ISP50



ISP38

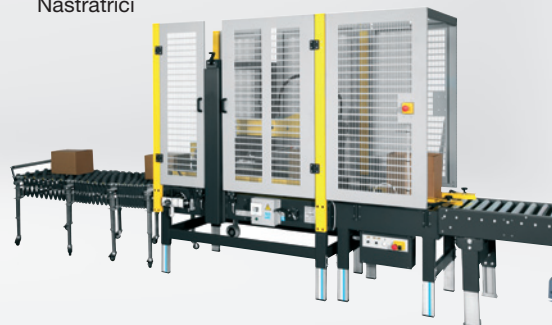


| Tipo Type Type Typ Tipo | Peso (gr) Weight (gr) Poids (gr) Gewicht (gr) Peso (gr) | | | | |  | | |  | Peso (Kg) Weight (Kg) Poids (Kg) Gewicht (Kg) Peso (Kg) | | |  | | | PCS N° per N° for N° par N° für N° para pallet | | |
|-------------------------------------|---|-----|-----|-----|-----|---|-----|-------|---|---|----|-------|---|---------------|--------------------------|--|--|----------|
| | | | | | | A | B | C | | | | | l | w | h | | | |
| H1 | 380 | | | | | 50 | 120 | 76 | 20 | 9,5 | | | 520 | 360 | 300 | 600 | | |
| H3S | 330 | | | | | 50 | 120 | 76 | 20 | 9 | | | 520 | 360 | 300 | 600 | | |
| H11 CP | 470 | | | | | 50 | 120 | 76 | 20 | 10 | | | 520 | 360 | 300 | 600 | | |
| H2S | 328 | | | | | 50 | 120 | 76 | 20 | 9 | | | 520 | 360 | 300 | 600 | | |
| H66 CP | 500 | | | | | 50 | 140 | 76 | 20 | 10,4 | | | 540 | 370 | 380 | 400 | | |
| H75 CP | 630 | | | | | 75 | 120 | 76 | 5 | 3,5 | | | 460 | 265 | 155 | 480 | | |
| H15 | 460 | | | | | 50 | 140 | 76 | 20 | 10 | | | 560 | 410 | 235 | 640 | | |
| H100 | 1060 | | | | | 100 | 140 | 76 | 5 | 5,9 | | | 650 | 210 | 250 | 125 | | |
| H13 | 1370 | | | | | 50 | 140 | 76 | 20 | 29 | | | 540 | 370 | 380 | 400 | | |
| H14 | 1370 | | | | | 50 | 140 | 76 | 20 | 29 | | | 540 | 370 | 380 | 400 | | |
| SL1 | 1600 | | | | | 25 | 140 | 25/76 | 6 | 9,9 | | | 490 | 240 | 320 | 330 | | |
| SL3 | 4300 | | | | | 75 | 190 | 76 | 1 | 4,7 | | | 310 | 220 | 230 | 50 | | |
| LP6 | 1200 | | | | | 150 | 145 | 76 | 4 | 5,5 | | | 420 | 290 | 280 | 100 | | |
| D2 | 19 | 25 | 30 | 38 | 50 | 19/25/30 38/50 | 120 | 76 | 19 | 25 | 30 | 38 | 50 | 19/25/30 9 Kg | 19/25/30 410 x 270 x 220 | | | ~ 800 pz |
| | 330 | 370 | 420 | 460 | 480 | | | | 28 | 24 | 20 | 30 | 25 | | | | | |
| D6 | 70 | | | | | 50 | 115 | 76 | 250 | | | 17,8 | 610 | 400 | 340 | 4000 | | |
| E3 | 500 | | | | | 12 | 120 | 76 | 10 | | | 5,3 | 420 | 240 | 330 | 400 | | |
| E7 | 1000 | | | | | 12 | 120 | 76 | 10 | | | 9,6 | 240 | 410 | 330 | 480 | | |
| E7R | 1000 | | | | | 12 | 120 | 76 | 10 | | | 9,6 | 240 | 410 | 330 | 480 | | |
| E7R INOX | 1000 | | | | | 12 | 120 | 76 | 10 | | | 9,6 | 240 | 410 | 330 | 480 | | |
| E77 | 1140 | | | | | 12 | 190 | 76 | 10 | | | 11,85 | 420 | 300 | 360 | 320 | | |
| E9 | 4800 | | | | | 15 | 190 | 76 | 6 | | | 29,2 | 540 | 390 | 230 | 90 | | |
| B20 | 1350 | | | | | 25 | 125 | 25/76 | 8 | | | 12 | 430 | 350 | 110 | 672 | | |
| B21 | 620 | | | | | 19 | 70 | 25 | 20 | | | 14,5 | 320 | 340 | 160 | 800 | | |
| GOLF | 45 | | | | | 19 | 64 | 25 | 348 | | | 16,3 | 550 | 390 | 390 | 6960 | | |
| B3TC | 630 | | | | | 15÷50 | 140 | 76 | 10 | | | 6,5 | 360 | 340 | 140 | 720 | | |
| B22 | 2400 | | | | | 25 | 125 | 25/76 | 6 | | | 14,5 | 420 | 200 | 300 | 288 | | |
| SRT | 2260 | | | | | CORE 76-50-38 mm h 508 mm | | | 6 | | | 15 | 570 | 520 | 425 | 72 | | |
| SP38 | 219 | | | | | CORE 38 mm high 508 mm | | | 32 | | | 7 | 540 | 380 | 380 | 512 | | |
| SP50 | 250 | | | | | CORE 50 mm high 508 mm | | | 32 | | | 8 | 540 | 380 | 380 | 512 | | |
| ISP38 | 109 | | | | | CORE 38 mm high 150 mm | | | 32 | | | 3,5 | 260 | 330 | 230 | 512 | | |
| ISP50 | 109 | | | | | CORE 50 mm high 150 mm | | | 32 | | | 3,5 | 260 | 330 | 230 | 512 | | |

Case Eractors
Formatori



Case Sealers
Nastratrici



Battery Tools
Reggiatrici a batteria



Pallet Wrappers
Fasciapallet

